

Pacific Prestige 200



Make	Model	Length	Price	Year	Condition
Pacific Prestige	200	22 m	EUR 650,000	2004	Used

Boat Name	Hull Material	Number of Engines	Fuel Type
Shaula	Steel	2	Diesel

March 2019 - Massive Price Reduction! Best Priced 20 mt. Steel Displacement Vessel on the Market! Trade in considered!

Additional Information and Photos

Measurements

Cruising Speed: 8 kn
Max Speed: 12 kn
Range: 4800 nmi
LOA: 22 m
Fuel Tanks Material: Steel
Number of Cabins: 5
Number of Heads: 4

Propulsion

Engine #1

Engine Make: Volvo
Engine Model: D6
Primary Engines: Inboard
Drive Type: Shaft Drive
Location: Port
Engine Year: 2004
Hours: unknown
Power: 310 hp

Engine #2

Engine Make: Volvo
Engine Model: D6
Primary Engines: Inboard
Drive Type: Shaft Drive
Location: Starboard
Engine Year: 2004
Hours: unknown
Power: 310 hp

Electronics

Depthsounder
Radar
Log-Speedometer
Radar Detector
Wind Speed and Direction
Computer
Repeater(s)
TV Set

Additional Information and Photos

Plotter
DVD Player
Autopilot
Radio
Compass
CD Player
GPS
VHF

Inside Equipment

Stern Thruster
Dishwasher
Bow Thruster
Washing Machine
Electric Bilge Pump
Oven
Manual Bilge Pump
Microwave Oven
Air Compressor
Air Conditioning
Electric Head
Heating
Hot Water
Refrigerator
Fresh Water Maker
Deep Freezer
Sea Water Pump
Battery Charger

Electrical Equipment

Shore Power Inlet
Generator
Inverter

Outside Equipment/Extras

Teak Cockpit
Cockpit Shower
Teak Sidedecks
Gangway
Davit(s)
Hydraulic Gangway

Additional Information and Photos

Radar Reflector
Tender
Solar Panel
Liferaft
Cockpit Cushions
Cockpit Table
Swimming Ladder

Disclaimer

The Company offers the details of this vessel in good faith but cannot guarantee or warrant the accuracy of this information nor warrant the condition of the vessel. A buyer should instruct his agents, or his surveyors, to investigate such details as the buyer desires validated. This vessel is offered subject to prior sale, price change, or withdrawal without notice.

Full Description

Category A "Ocean" unlimited navigation - 4000 Nm Range

Flag: Malta (Pleasure)

PROPULSION AND POWER SUPPLY

2 x 310 Hp VOLVO PENTA

1x 17,5 kW Onan Generator

1x 7 kW Onan Generator

1 x 5kW Inverter

6 X Solar Panel Pack (Daily Power Autonomy "Zero Noise") New 2018

HYDRAULIC EQUIPMENT

2x Stabilizers VETUS,

2x Hydraulic bow and stern thrusters (225 Kgf hp each)

1x Hydraulic Platform

1x Hydraulic Passerelle

INTERIORS

Cabins 4 (1 master, 3 guest, 8 berths in total) 1 crew (1 Captain/Stewardess)

(Captain cabin if necessary can be used/converted to Guest Cabin - The cabin is fitted to high standards)

Additional Information and Photos

4 Bathrooms

Galley with table and bench for 4 pax, fully MIELE equipped (ceramic hob, refrigerator, deep freezer, multifunctional oven, coffee machine, dish washer, 2 sinks).

Living room equipped with wine cellar (new 2017)

ELECTRONIC EQUIPMENT

Engine alarm , Electronic throttles, Rpm synchronization, compass, depth display,

Raymarine package Radar GPS Plotter 2x screens (New year 2017).

Display for stabilizer activity, Log, Navtech, Autopilot, VHF (2015, new).

Surveillance camera and Display for stern and engine room, Radio FM speakers in living room, bow and stern, guest and crew cabins, BOSE surround in living room and master cabin, TV/SAT/ DVD in living room and master cabin.

CONFORT AND ELECTRIC EQUIPMENT

Air conditioning CLIMMA with 2 compressors, Water pumps 2, Boiler KABOLA (hot water and heating), Water maker (ltr/h) , 200 (IDROMAR), searchlight outside, Washing machine and drier i
HYDRAULICS

Anchor winch, 2 x Stern and Bow Trusters, Besenzoni Passerelle with remote, Hydraulic Platform for Tender Launch and Swimming confort
SAFETY

Dutch homologation by NKIP, Complete safety equipment, EPIRB, Fire alarm in engine room, Smoke detectors all over the boat, Alarm system PARADOX.

- TENDERS

2017 - Pirelli S310 with Mercury 20HP (New)

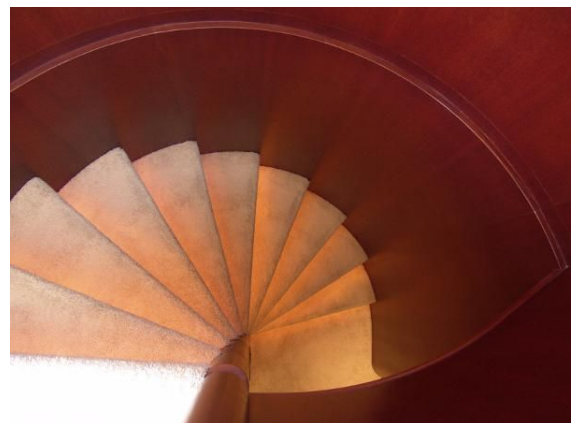
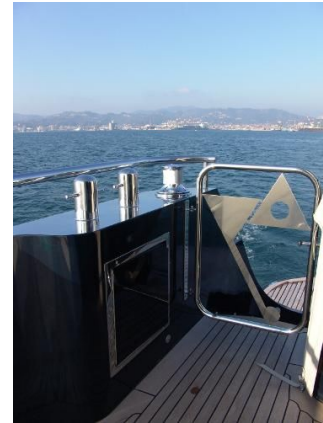
Additional Information and Photos



Additional Information and Photos



Additional Information and Photos



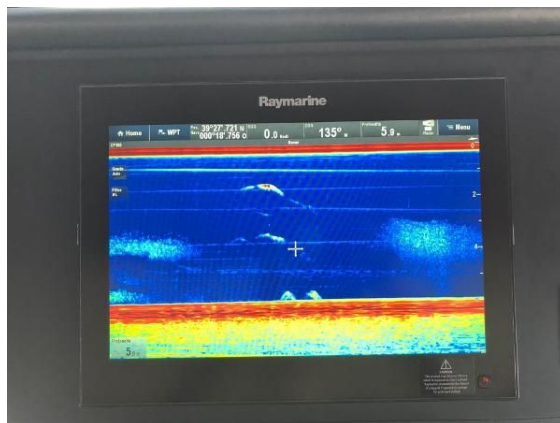
Additional Information and Photos



Additional Information and Photos



Additional Information and Photos



Additional Information and Photos

